

Distributor/Agent Contact:

## Contact Us

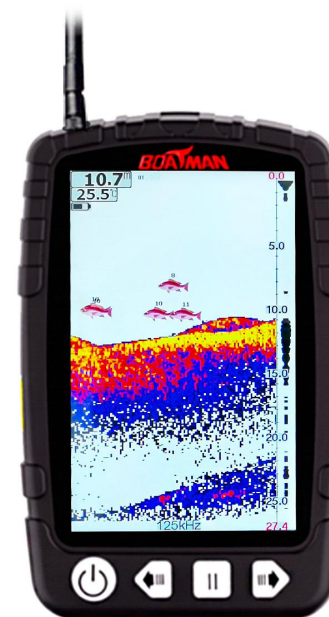
**Shenzhen Boatman Technology Co.,Ltd**

Address: Room201 2nd Floor, No.5 Longxi Road,  
Longgang Street,Longgang District, Shenzhen,  
Guangdong China.

Website: [www.boatmanboat.com](http://www.boatmanboat.com)



[www.boatmanboat.com](http://www.boatmanboat.com)



## Fish Finder User Manual

Boatman

## I. Overview

The boatman SN3.2 fish finder is suitable for fishing enthusiasts and fishermen to fish in rivers, lakes, seas and other locations. It's easy to see the depth, the terrain, the number of fish etc. under water with this device.

## II. Working Principle

Sonar technology uses the propagation and reflection of ultrasonic waves to determine the distance and shape of objects. This product uses this technology to directly detect and identify the fish situation in the water and the depth of the bottom using a sonar sensor.

When the machine is working, the sonar sensor will send out an ultrasonic signal, which will be reflected back when it encounters an underwater object, and then the device will calculate its distance and position according to the reflection time and waveform.

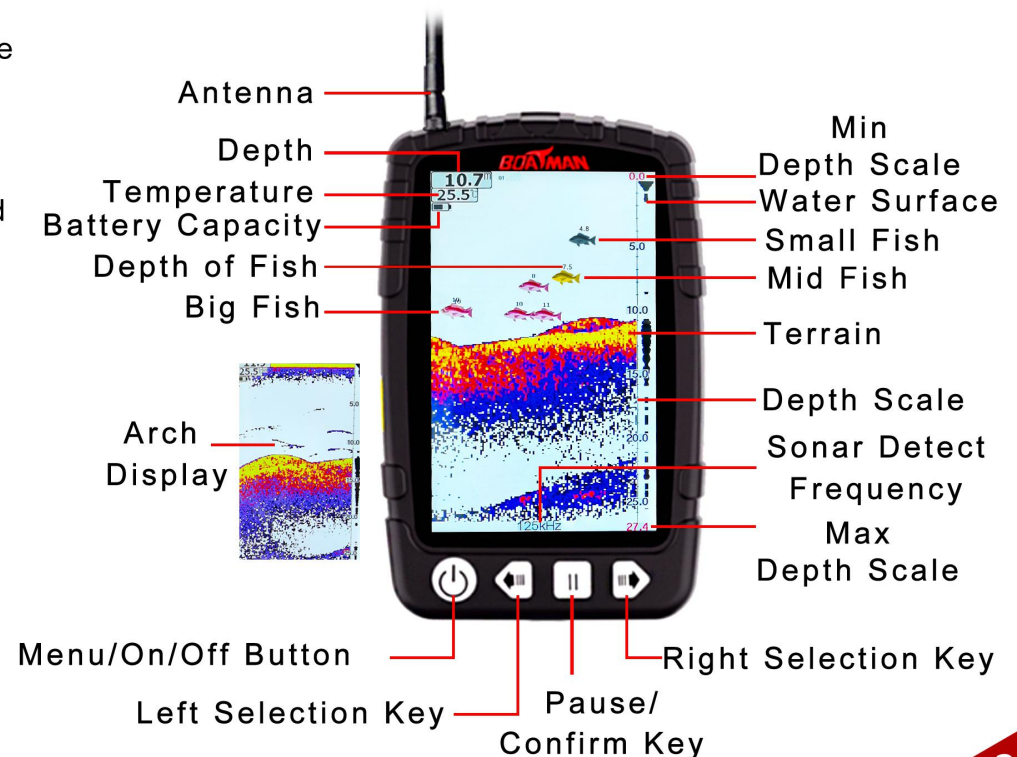
## III. Product Specifications

Screen Size	4.7 inch
Resolution	480*800
Detect Depth	0.6~40m
Accuracy	0.1m
Wireless Frequency	433MHz
Working Environment	5~50°C
Working Distance	300m

## IV. Product Function

- 1.Terrain/Temperature Display
- 2.Fish Symbols/Depth
- 3.Fish Beep Alarm
- 4.Depth Range Setting
- 5.Noise Rejection
- 6.1-100% sensitivity setting
- 7.Backlight/Volume Setting
- 8.Unit Setting(m/ft)

## V. Screen Details



## VI. Button operation

### 1.Power On/Off Button

**Power On:** Keep pressing the button for 3 seconds to switch the device on, and then it will automatically enter the system with the mode and value setting in the last normal shutdown.

**Power Off:** Keep pressing the button for 3 seconds to power off

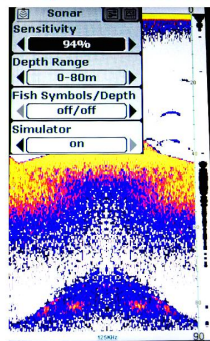
**Menu Switch:** Press the button once to switch on the menu in the screen

**Save Setting:** Keep pressing the pause button for 3 seconds to save the manu setting you made

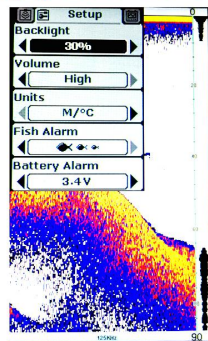
There are totally 3 menus [**Sonar**][**Setup**] [**Advanced**],- see picturs as below. customers can switch to different manu by press the button once

Customers can use the left/right selection buttons to select the menu items or set the value in the selected item. Once the value of the selected item in the menu modified, the system perform the last setting in real time.

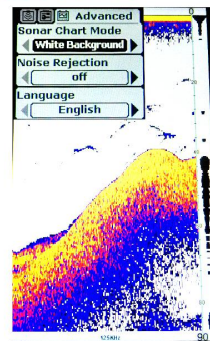
**Note:**When the device installed incorrectly or exceeds the depth detect range,it will display '0.0' for depth in screen,and automatically power off 5 minutes later.



[Sonar] Menu



[Setup] Menu



[Advanced] Menu

### 2.Pause/Confirm Key

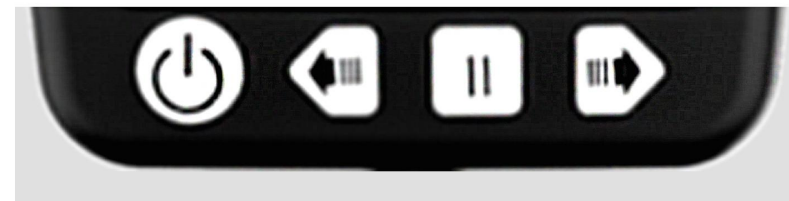
**Pause:** Press Pause Key once to stop freshing while the device is working; Press it once again to fresh again.

**Confirm:** Press the Confirm Key once to select item in the menu, the background of the selected item turns red after selection confirmed. At this time, the value of the item is modifiedable. You can use the left/right selection key to modify the value of the item. Press the button once again to exit the selected state, the background of the item turns back to black, customers can use the left/right selection key to select the other items up and down.

**Exit:** Long press the Confirm Key to exit the menu and back to the sonar display interface.

### 3.Left/Right Selection Key

When you press the power key once to enter the menu setting, the left/ right selection key can use to select the item in the menu up and down that needs to modify . After confirming the selected item, the background of the selected item turns red, the left / right selection key can be use to modify the value of the items



## VII. Menu Function Setting

### Menu Composition

The main menu of the system consists of 3 sub-menu :[Sonar] menu, [Setup] menu, and [advanced] menu.

Use the power button to switch to the 3 different sub-menus

#### 1. [Sonar] menu function setting

Press the power button once to enter the sonar menu. This menu has 4 items: 1)Sensitivity; 2)Depth Range; 3)Fish Symbols/Depth; 4)Simulator.

##### 1)Sensitivity

Press the power button to select the "Sonar" menu, and then press the confirm button to select the sensitivity item. When the background of the item turns red, the setting value can be adjusted: "1%" to "100%" or "Auto" , Left/Right Selection Key can modify the selected item value.

Users can filter the sonar echo signals by setting the sensitivity, and display the signals they need on the screen. If the user needs to see more echo signals, it is necessary to increase the value of sensitivity. In the case of high sensitivity, a lot of noise under water will inevitably be displayed on the screen. If the user does not want to see these underwater noises, then the sensitivity setting should be set lower. Users can adjust the sensitivity setting according to their actual needs. If the sensitivity is set to "Auto", the system will automatically setting the sensitivity according to the depth of the water, and the user does not need to set it manually. All objects in the water, regardless of their size, softness, or hardness, will produce certain sound reflections. Larger or harder objects will also produce multiple reflection waves, so it is necessary to filter out useless information. That is why we use sensitivity setting

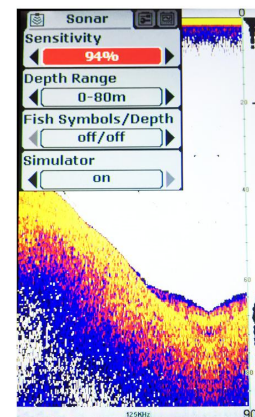
the higher the sensitivity, the smaller object can be verified and detected, the more that can be displayed in the screen, It may cause the screen display to be messy.

Oppositely, if we reduce the sensitivity, the bigger object can be verified and detected, the system will filter out some information and simply display in the screen. Note: what you filter out at this time may also be very important information for you .

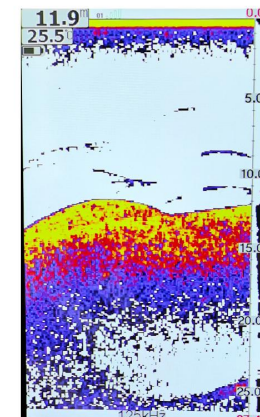
So, after you use it for a period of time, choosing the suitable sensitivity and the suitable depth range (which we will mention later) will be very important.

Generally, we recommend that you increase the sensitivity when the water is deep or the water is clear, and you can decrease the sensitivity when there are more impurities or shallow water. This can reduce some detect errors.

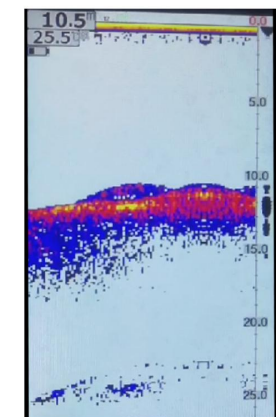
We can also use this function to distinguish big and small fish. if there are lots of fish under water, lower the sensitivity, then the objects with weaker reflection waves will be filtered out, then the remaining fish which displayed in the screen will be bigger



Sensitivity



Sensitivity High

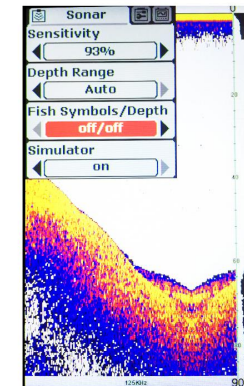
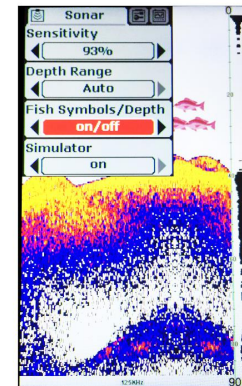
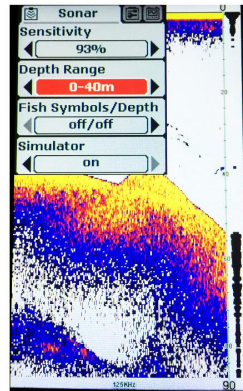


Sensitivity Low

## 2) Depth Range

Press the Power key to select the "sonar" menu, select the item "depth range" and press the confirm button to modify, press the left/right selection key to set value of the item: when the depth unit is set to "M" (meter), the set value is "0-3m", "0-5m", "0-10m", "0-20m", "0-30m", "0-40m", "Auto".

When the depth range is set to a fixed value, the screen will adjust to the corresponding display range according to the set value. Content beyond the set range will no longer be displayed.



## 3) Fish Symbols/Depth

The optional setting values are: "on/on", "on/off" and "off/off".

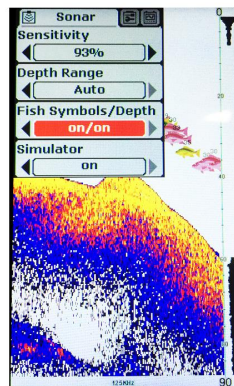
"On/On" shows both fish symbol and fish depth;

"On/Off" Only show fish symbol but not fish depth;

"Off/Off" The fish symbol and fish depth are both not displayed, and the Arches displayed.

When the fish symbol and fish depth display is set to "on", the system will analysis, according to the strength and weakness of echo signal under water, show these signals as different sizes fish symbols, and the depth corresponding to these signals will be shown above the fish symbol.

This product is a very powerful echo signal analysis system, which can remove part of the underwater acoustic noise, surface clutter and temperature change layer through menu settings, and then display the remaining signals as fish symbols. However, the system is also limited, and some situations cannot be identified. For example, dead branches suspended in the water, air bubbles, garbage, etc. may also be displayed as fish symbols.

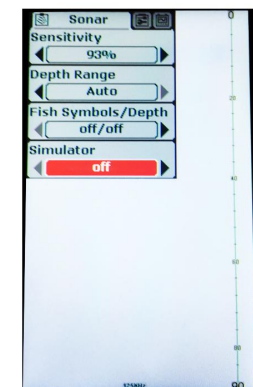
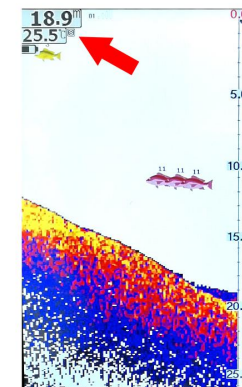
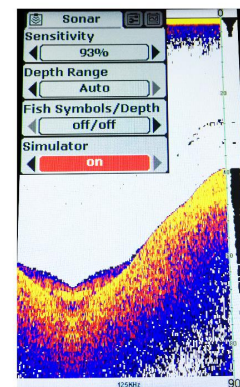


## 4) Simulator

The optional setting values are: "on" and "off"

The simulator is a function that provides users with experience detection effects and familiarity with sonar settings.

The values of other items modified by the user are also performed by the system in real time in simulate mode. When this item is set to "On", the letter "S" will be displayed on the screen.



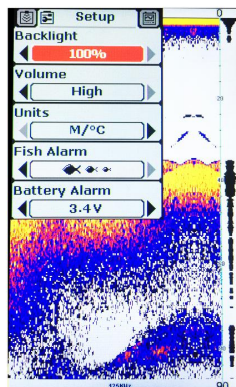
## 2.[Setup] Menu

Press the power button twice to enter the [Setup] menu. This menu has 5 items: 1)Backlight; 2)Volume; 3)Units; 4)Fish Alarm; 5)Battery Alarm;

### 1)Backlight

The optional setting values are: "Off" "30%" "60%" "100%" .

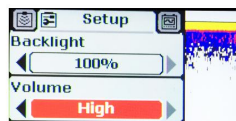
Users can set the backlight to adjust the brightness of the screen according to their needs to obtain a suitable display effect. When the backlight is set to '30%~100%' the background light of the screen will be always on, which consumes more power and battery last for less time. Therefore, it is better to use this function in low light conditions.



### 2)Volume

The optional setting values are: "high" "medium" "low"

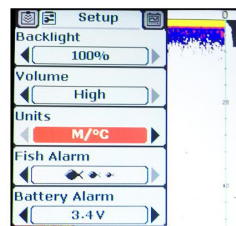
Users can adjust the volume setting according to their needs.



### 3)Units

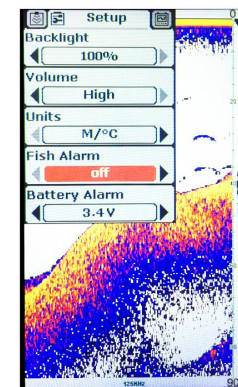
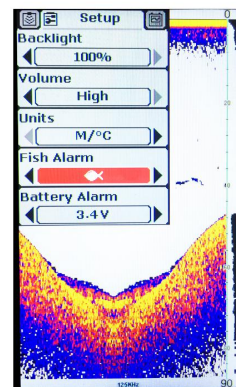
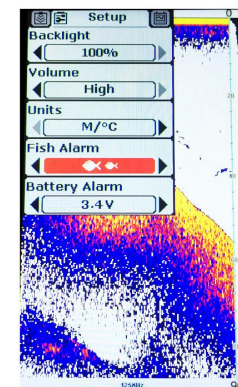
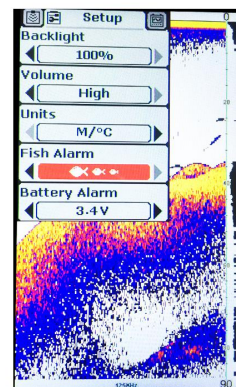
The optional setting values are: "ft/°C" (Feet/Celsius), "ft/°F" (Feet/Fahrenheit), "m/°C" (Meter/Celsius), "m/°F" ( Meter/-Fahrenheit)

Users can set the unit according to their needs.



## 4) Fish Alarm

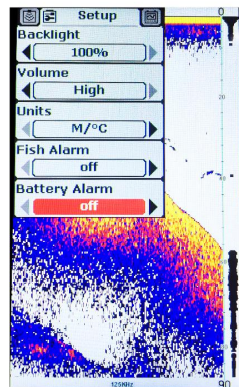
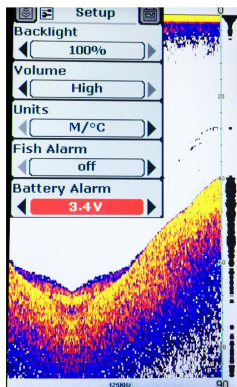
When the item 'fish alarm' is set to 'off', the system will not beep if there is fish under water. for the other value except 'off', it will show the selected fish symbol type in the screen. When the item '**Fish Symbols**' in [Sonar] Menu set to 'off', the setting of this item is not effect.



### 5) Battery Alarm

The optional setting values are: "OFF", "3.4V" to "4V", increasing or decreasing in units of 0.1V.

When the input of battery power is equal to or less than the power set in the item, it will beep and the battery capacity display will keep flashing.



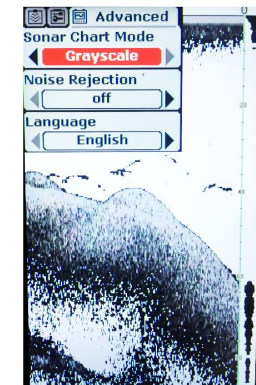
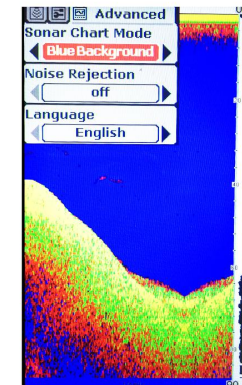
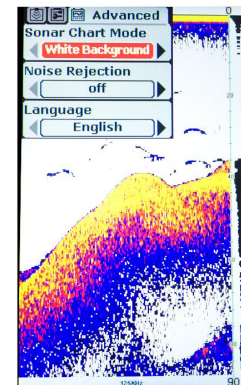
### 3. [Advanced] Menu

Press the power button three times to enter the [Advanced] menu. There are 4 items in this menu: 1) Sonar Chart Mode; 2) Noise Rejection; 3) Language; 4) Default Settings

#### 1) Sonar Chart Mode

The optional setting modes are: "White Background"; "Gray Background"; "Blue Background"

Users can select the corresponding sonar chart mode according to their preferences.

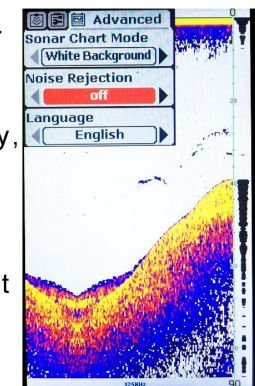


#### 2) Noise Rejection

The optional setting values are: 'Off', 'High', 'Medium', 'Low'. Users can adjust the corresponding settings according to their needs.

Noise Rejection is the function that the system automatically filters discrete noise to achieve better analysis results to display, but it also filters some useful signals. This noise rejection function may provide users with the best display in most cases.


If the environment is complicated, try to set the value of this item to 'High'. However, if you still see noise, we recommend you to find the source of the interference and remove it instead of keep setting this item value in 'high'.

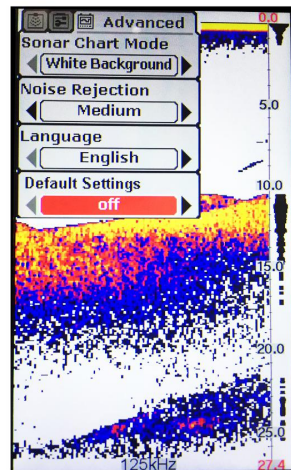


### 3) Default Settings

The optional setting values are "on" and "off"  
it has default settings when we release the product from factory. If the user wants to cancel the setting they make before, they only need to set this item to 'On' to reset to the default settings. Normally, this item is set to 'Off'.

Default Settings as below:

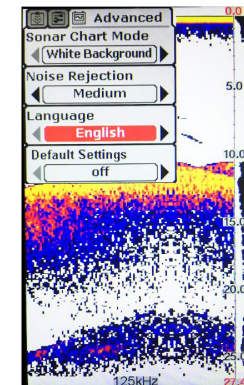
1. Sensitivity: 90%
2. Depth Range: 0-40 meters
3. Fish Alarm: 
4. Units: M/°C
5. Battery Alarm: on
6. Sonar Chart Mode: White Background
7. Noise Rejection: Medium
8. Language: English




### 4) Language

This product provides totally 17 languages: English; Russian; French; Chinese; Japanese; Finnish; Polish; German; Italian; Spanish; Dutch; Korean; Swedish; Greek; Danish; Czech ;Portuguese.

Customers can choose the corresponding language according to their needs for better experience



Important note (pairing): In order to avoid interference from other wireless fish detectors or if receivers not receiving the transmitter (sensor) signal, you can follow the steps below for pairing.

1. Please make sure that the receiver(screen) and transmitter(boat) are both off before pairing.
2. When the receiver is off, keep press the Pause Button and Power Button at the same time for 3 seconds , it will show  in the screen
3. Turn on the boat (power on the transmitter). After it works normally, the screen receives the signal from the boat, and it will show **OK** in the screen(pairing success)
4. Turn it on again and it works normally.